

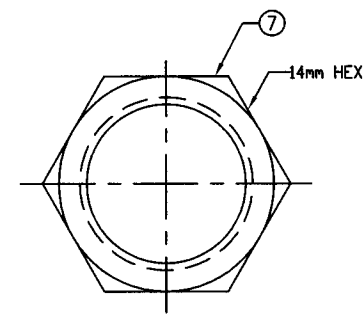
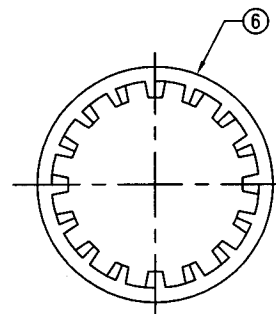
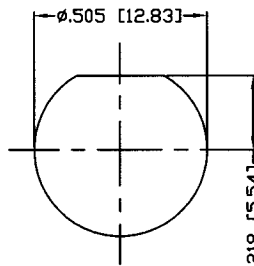
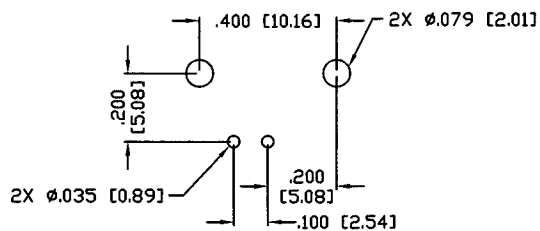
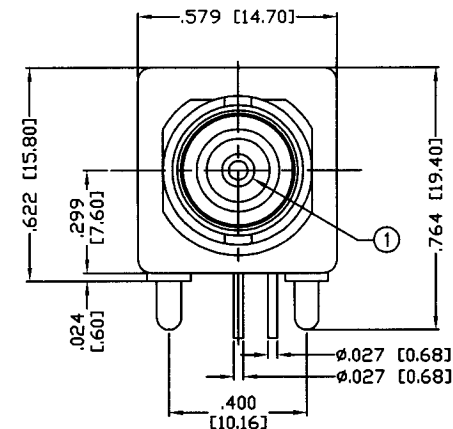
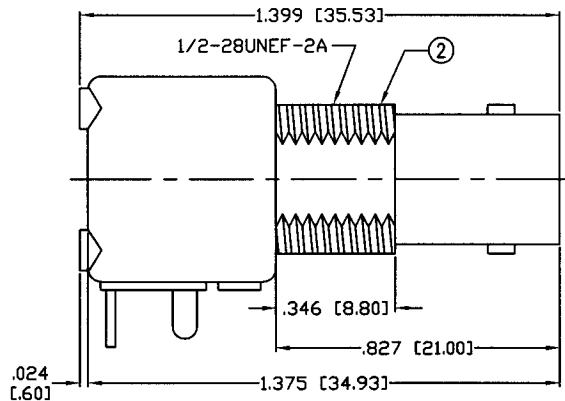
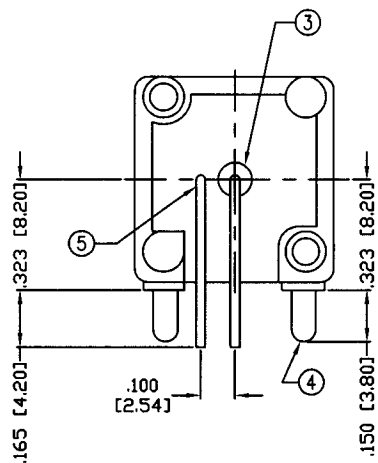
THIS DRAWING CONTAINS INFORMATION PROPRIETARY TO RF INDUSTRIES.
 ANY UNAUTHORIZED USE OF THIS DRAWING IS EXPRESSLY PROHIBITED
 WITHOUT WRITTEN PERMISSION FROM RF INDUSTRIES.
 ANY VIOLATION IS PUNISHABLE UNDER U.S. COPYRIGHT LAWS.

ALL DIMENSIONS ARE REFERENCE ONLY

PART NO.

RFB-1111

REV	DESCRIPTION	DWN	DATE	APPROVED
A	ENGINEERING RELEASE	KMM	7/18/92	J. BENZ
B	STANDARDIZE	KMM	11/22/93	J. BENZ
C	CREATE ENVELOPE DRAWING	KMM	7/25/97	R. RICE
D	ADDED DIMENSIONS, UPDATE DWG LAYOUT	CZS	4/2/02	JDMc



SPECIFICATIONS:

PCB HOLE CONFIGURATION

RECOMMENDED PANEL CUTOUT

IMPEDANCE: 50 Ohms
 FREQUENCY RANGE: 0-2 GHz
 WORKING VOLTAGE: 500 V rms @ sea level

#	DESCRIPTION	QTY	MATERIAL	FINISH	APPROVALS	DATE
1	CONTACT	1	PHOS. BRONZE	GOLD, 3 μ "		
2	BODY	1	DIECAST ZINC	NICKEL, 100 μ "		
3	INSULATOR	1	PE-606	---		
4	MOUNTING POST	2	BRASS	TIN LEAD		
5	GROUND LEAD	1	BRASS WIRE	TIN LEAD		
6	LOCK WASHER	1	STEEL	NICKEL, 100 μ "		
7	HEX NUT	1	BRASS	NICKEL, 100 μ "		
8						
9						
10						
11						
12						
13						
14						

000486	
DRAWN C. ZUNIGA	4/2/02
CHECKED JDMc	4-2-02
ORJ DRAWN P. BREAUX	7/18/92

UNLESS OTHERWISE SPECIFIED:
 1. REMOVE ALL BURRS
 2. BREAK ALL CORNERS & EDGES .005 R. MAX.
 3. CHAMFER 1ST & LAST THREADS 45°
 4. SURFACE ROUGHNESS 63 FINISH MIL-STD-10
 5. DIAMETERS ON COMMON CENTERS TO BE CONCENTRIC WITHIN .002 T.I.R.
 6. ALL DIMENSIONS ARE AFTER PLATING.

DIMENSIONS ARE IN INCHES AND [MILLIMETERS]
 UNLESS OTHERWISE NOTED TOLERANCES ARE:
 DECIMALS .XXX±.003 [.08]
 .XX±.005 [.13]
 DIAMETER .XXX±.001 [.03]
 .XX±.003 [.08]

7610 MIRAMAR RD
 SAN DIEGO, CA 92126
 (858) 549-6340
 (858) 549-6345 FAX

RF connectors
 DIVISION OF RF INDUSTRIES, LTD.

BNC JACK
 RIGHT ANGLE, P. C. B. MOUNT, DIECAST

SIZE A	CABLE GROUP N/A	DWG NO. RFB-1111	REV D
-----------	--------------------	---------------------	----------

SCALE: NTS CAD FILE OUTLINE SHEET 1 OF 1