

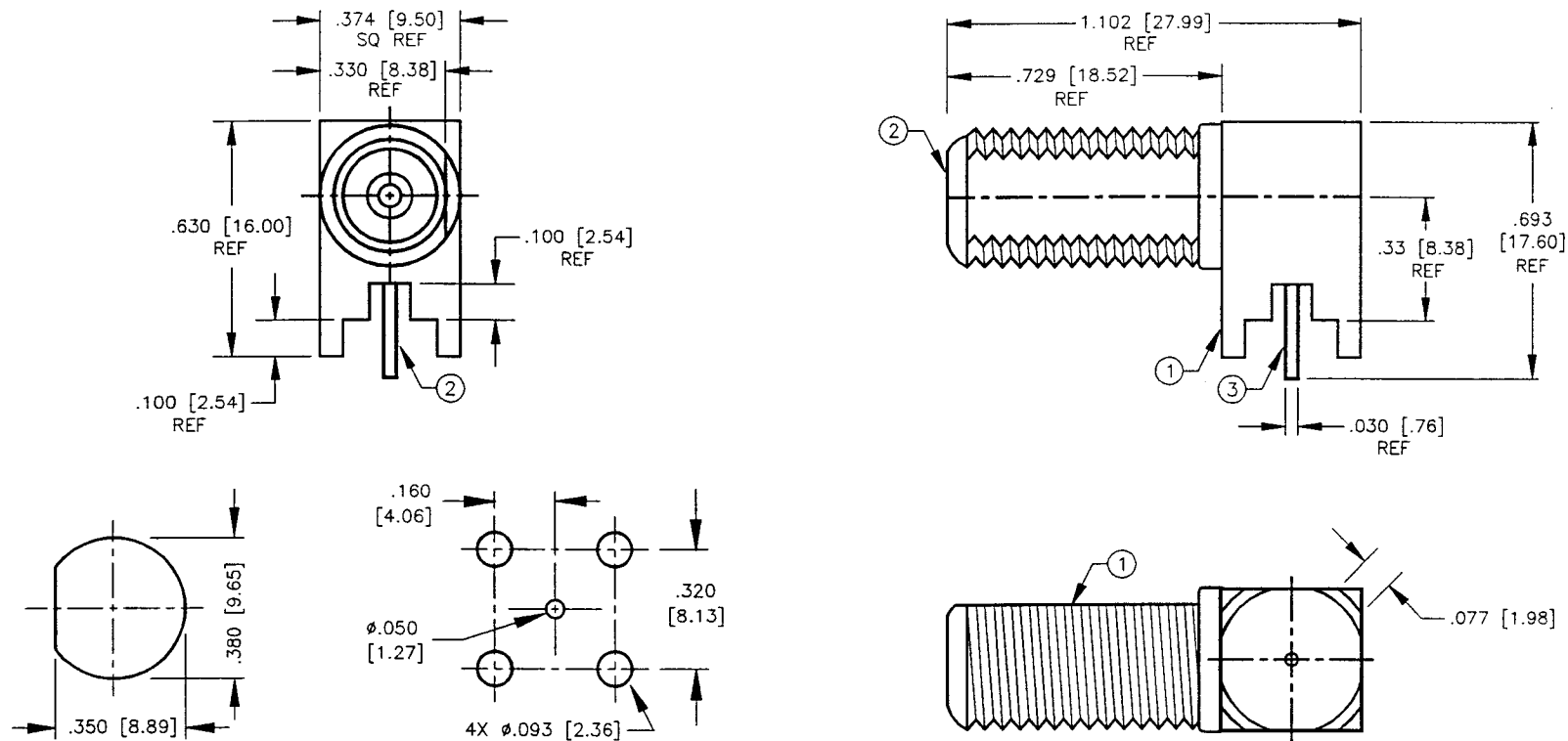
ENVELOPE / ASSEMBLY DRAWING

000494

SPECIFICATION CONTROL DRAWING

THIS DRAWING CONTAINS INFORMATION PROPRIETARY TO RF INDUSTRIES, LTD. ANY UNAUTHORIZED USE OF THIS DRAWING IS EXPRESSLY PROHIBITED. ANY VIOLATION IS PUNISHABLE UNDER U.S. COPYRIGHT LAWS.

REV	DESCRIPTION	DWN	DATE	APPROVED
A	ENGINEERING RELEASE	CJ	11/11/91	J. BENZ
B	ENGINEERING RELEASE	KMM	11/19/96	R. RICE
C	ADD BODY DIM	CZS	6/25/97	R. RICE



SUGGESTED MOUNTING CONFIGURATION

SPECIFICATIONS:

IMPEDANCE: 75 OHMS

ITEM	DESCRIPTION	QTY	MATERIAL	FINISH
7	CENTER PIN	1	BRASS	TIN
6	DIELECTRIC	1	POLYPROPYLENE	NONE
5	DIELECTRIC	1	POLYPROPYLENE	NONE
4	DIELECTRIC	1	POLYPROPYLENE	NONE
3	CONTACT	1	PHOS BRONZE	TIN
2	BODY	1	BRASS	NICKEL
1	BASE	1	BRASS	NICKEL

DIMENSIONS ARE IN INCHES AND [MILLIMETERS]

UNLESS OTHERWISE NOTED TOLERANCES ARE:

DECIMALS DIAMETER

DRAWN C. ZUNIGA 6/25/97

CHECKED *[Signature]* 6/25/97

OR. DRAWN C. JONES 11/11/91

APPROVALS DATE

RF connectors
DIVISION OF RF INDUSTRIES, LTD.

7610 MIRAMAR RD
SAN DIEGO, CA 92126
(619)549-6340

(619)549-6345 FAX

RFF-1442-1

F FEMALE RIGHT ANGLE PCB MOUNT

SIZE	CABLE GROUP	DWG NO.	REV
A	N/A	7295	C

SCALE: 2:1 CAD FILE 13ARC B SHEET 1 OF 1