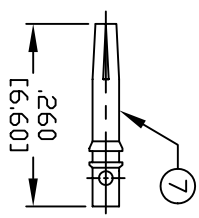
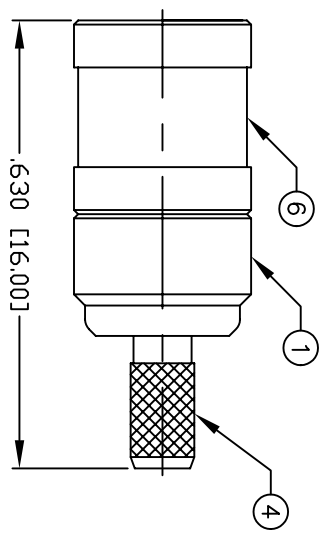
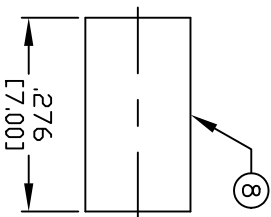


THIS DRAWING CONTAINS INFORMATION PROPRIETARY TO RF INDUSTRIES.
 ANY UNAUTHORIZED USE OF THIS DRAWING IS EXPRESSLY PROHIBITED
 WITHOUT WRITTEN PERMISSION FROM RF INDUSTRIES.
 ANY VIOLATION IS PUNISHABLE UNDER U.S. COPYRIGHT LAWS.

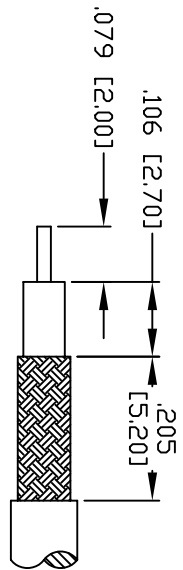
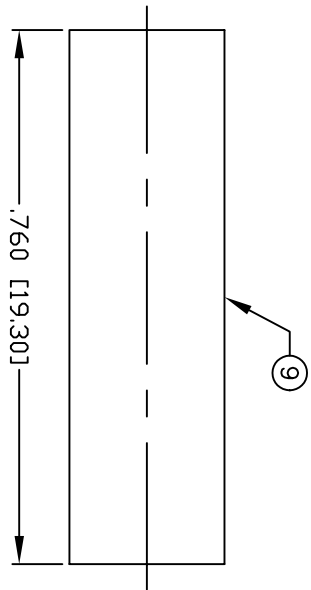
ALL DIMENSIONS ARE REFERENCE ONLY



RECOMMENDED SOLDER ONLY



RECOMMENDED CRIMP DIE: .130



RECOMMENDED STRIPPING DIM'S

SPECIFICATIONS:

IMPEDANCE: 50 Ohms
 FREQUENCY RANGE: 0-4 GHz
 WORKING VOLTAGE: 335 V rms Max. @ Sea Level
 VSWR MAX: 1.15
 INSERTION LOSS(DB): $0.03 \times \sqrt{f(\text{GHz})}$
 CONTACT RESISTANCE: $\leq 6 \text{ m Ohm}$
 INSULATION RESISTANCE: 1k M Ohms min.
 TEMPERATURE RANGE: -65°C TO 165°C
 FOR RG-316/U DOUBLE SHIELD CABLE

UNLESS OTHERWISE SPECIFIED:

1. REMOVE ALL BURRS
2. BREAK ALL CORNERS & EDGES .005 R. MAX.
3. CHAMFER 1ST & LAST THREADS 45°
4. SURFACE ROUGHNESS 63 FINISH MIL-STD-10
5. DIAMETERS ON COMMON CENTERS TO BE CONCENTRIC WITHIN .002 TIR.
6. ALL DIMENSIONS ARE AFTER PLATING.

DIMENSIONS ARE IN INCHES AND [MILLIMETERS]

UNLESS OTHERWISE NOTED TOLERANCES ARE:

DECIMALS .xxx±.003 [.08]
 DIAMETER .xxx±.001 [.03]
 .xxx±.005 [.13]

1	BODY	1	BRASS	GOLD, 3 μ"	008974		
2	INSULATOR	1	PTFE	---			
3	INSULATOR	1	PTFE	---			
4	FERRULE STUD	1	BRASS	GOLD, 3 μ"			
5	RETAINING RING	1	BRASS	---			
6	SHELL	1	BRASS	GOLD, 3 μ"			
7	CONTACT	1	BeCu	GOLD, 30 μ"			
8	FERRULE	1	COPPER	GOLD, 3 μ"			
9	TUBING	1	HEAT SHRINK	---			
10							
11							
12							
13							
14							
#	DESCRIPTION	QTY	MATERIAL	FINISH	APPROVALS	DATE	

RF connectors
 DIVISION OF RF INDUSTRIES, LTD.
 7610 MIRAMAR RD
 SAN DIEGO, CA 92126
 (858) 549-6340
 (858) 549-6345 FAX

SMB PLUG, CRIMP

SIZE	CABLE GROUP	DWG NO.	REV
A	B 1	RSB-4000-1B1	---
SCALE:	NTS	CAD FILE	OUTLINE
		SHEET	1 OF 1

PART NO.		RSB-4000-1B1	
REV	DESCRIPTION	DWN	DATE
-	ENGINEERING RELEASE	CZS	09/08/99
			JDMc