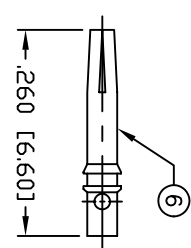
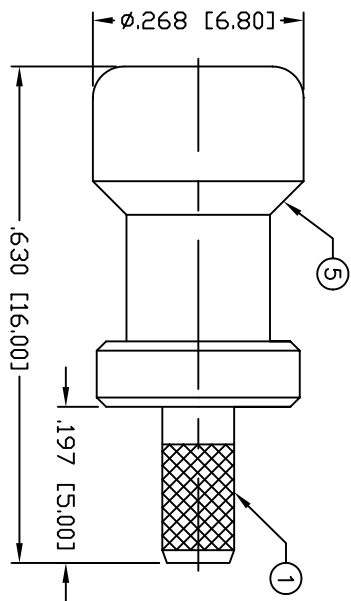
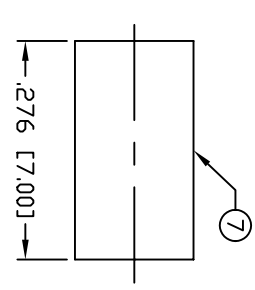


THIS DRAWING CONTAINS INFORMATION PROPRIETARY TO RF INDUSTRIES.  
 ANY UNAUTHORIZED USE OF THIS DRAWING IS EXPRESSLY PROHIBITED.  
 WITHOUT WRITTEN PERMISSION FROM RF INDUSTRIES.  
 ANY VIOLATION IS PUNISHABLE UNDER U.S. COPYRIGHT LAWS.

ALL DIMENSIONS ARE REFERENCE ONLY



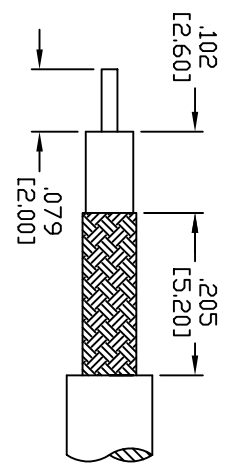
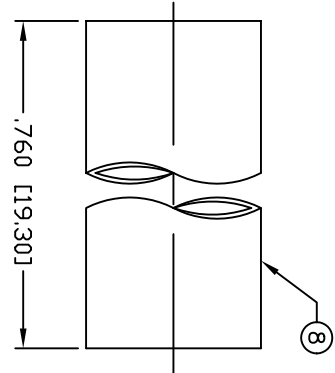
PIN TO BE SOLDER  
 IF CRIMPING, USE RFA-4089



RECOMMENDED CRIMP DIE: 130'

**SPECIFICATIONS:**


IMPEDANCE: 50 Ohms  
 FREQUENCY RANGE: 0-4 GHz  
 WORKING VOLTAGE: 335 V rms Max. @ Sea Level  
 VSWR MAX: 1.15  
 INSERTION LOSS(DB): 0.03 x  $\sqrt{f}$ (GHZ)  
 CONTACT RESISTANCE:  $\leq 6$  m Ohm  
 INSULATION RESISTANCE: 1k M Ohms min.  
 TEMPERATURE RANGE: -65°C TO 165°C  
 FOR RG-316/U DOUBLE SHIELD CABLE



RECOMMENDED STRIPPING DIMENSIONS

#	DESCRIPTION	QTY	MATERIAL	FINISH	APPROVALS	DATE
1	BODY	1	BRASS	NICKEL, 100μ"	008974	
2	INSULATOR	1	PTFE	---		
3	INSULATOR	1	PTFE	---		
4	SNAP RING	1	Be-Cu	NICKEL, 100μ"		
5	SHELL	1	COPPER	NICKEL, 100μ"		
6	CONTACT	1	Be-Cu	GOLD, 30μ"		
7	FERRULE	1	COPPER	NICKEL, 100μ"		
8	TUBING	1	HEAT SHRINK	---		
9						
10						
11						
12						
13						
14						

UNLESS OTHERWISE SPECIFIED:  
 DIMENSIONS ARE IN INCHES  
 AND [MILLIMETERS]  
 UNLESS OTHERWISE NOTED  
 TOLERANCES ARE:  
 DECIMALS DIAMETER



**RF connectors**  
 DIVISION OF RF INDUSTRIES, LTD.

7610 MIRAMAR RD  
 SAN DIEGO, CA 92126  
 (858) 549-6340  
 (858) 549-6345 FAX

# SMB PLUG, CRIMP

SIZE	CABLE GROUP	DWG NO.	REV
A	B 1	RSB-4000-B1	D

SCALE: NTS CAD FILE OUTLINE SHEET 1 OF 1

REV	DESCRIPTION	DWN	DATE	APPROVED
A	ENGINEERING RELEASE	KMM	6/19/95	R. RICE
B	CHANGE FERRULE LENGTH	KMM	9/1/95	R. RICE
C	CREATE ENVELOPE DRAWING	CZS	9/3/97	R. RICE
D	CHG. CONNECTOR, CONTACT & FER DIMS / UPDATE DWG AND SPECS	CZS	11/19/04	JDMC

PART NO. **RSB-4000-B1**