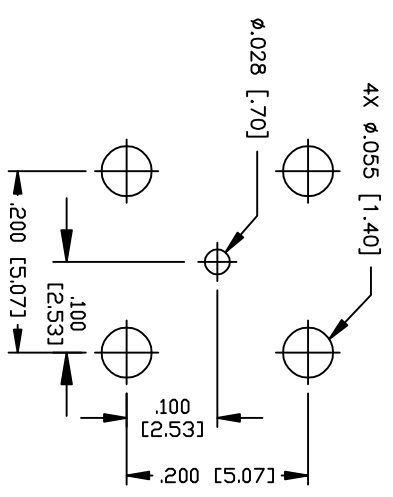
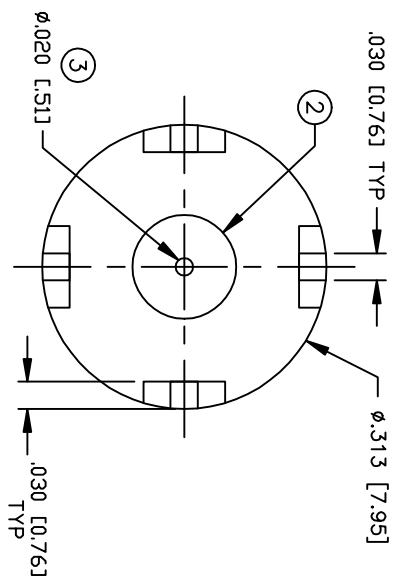
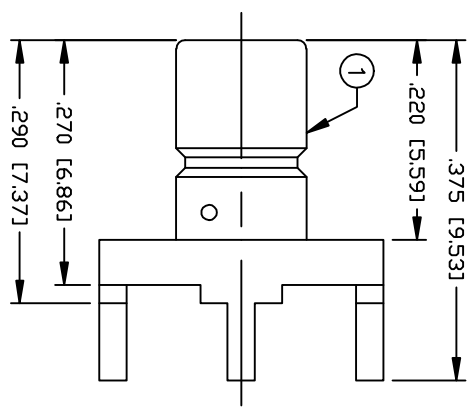


PART NO. **RSB-4350-1-75**

REV	DESCRIPTION	DWN	DATE	APPROVED
A	ENGINEERING RELEASE	KMM	12/26/95	R. RICE
B	UPDATED DWG / CHANGE DWG # FROM 8589	CZS	07/24/08	JDmc



RECOMMENDED MOUNTING CONFIGURATION

SPECIFICATIONS:

IMPEDANCE: 75 Ohms
 FREQUENCY RANGE: 0-2 GHz
 INSULATION RESISTANCE: 1k M Ohms min.
 TEMPERATURE RANGE: -65°C TO 165°C

#	DESCRIPTION	QTY	MATERIAL	FINISH
3	CONTACT	1	BRASS	GOLD, 30µ"
2	INSULATOR	1	PTFE	---
1	BODY	1	BRASS	GOLD, 3µ"

CUSTOMER OUTLINE DRAWING	ALL DIMENSIONS ARE REFERENCE ONLY
UNLESS OTHERWISE SPECIFIED, DIMENSIONS ARE IN INCHES AND [MILLIMETERS]	
DRAWN BY: C. ZUNIGA	CHECKED BY: K. MAXWELL
DATE: 07/24/08	DATE: 12/26/95



PROPRIETARY AND CONFIDENTIAL
 THIS DRAWING CONTAINS INFORMATION PROPRIETARY TO RF INDUSTRIES. ANY UNAUTHORIZED USE OF THIS DRAWING IS EXPRESSLY PROHIBITED WITHOUT WRITTEN PERMISSION FROM RF INDUSTRIES. ANY VIOLATION IS PUNISHABLE UNDER U.S. COPYRIGHT LAWS.

RF connectors
 DIVISION OF RF INDUSTRIES, LTD.
 7610 MIRAMAR RD.
 SAN DIEGO, CA 92126
 (858) 549-6340
 (858) 549-6345 FAX

SMB JACK
 PCB MOUNT, VERTICAL, 4 LEG

SIZE: A	CABLE GROUP: N/A	DWG NO.: RSB-4350-1-75	REV: B
SCALE: NTS	ENGINEERING ID: 001560	SHEET: 1	OF: 1