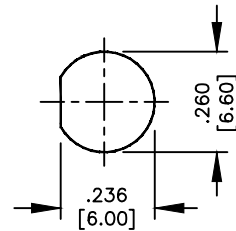
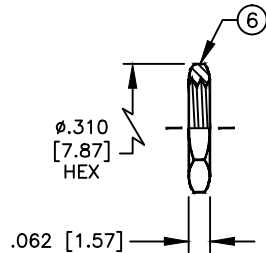
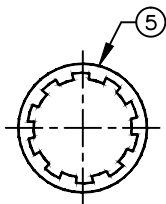
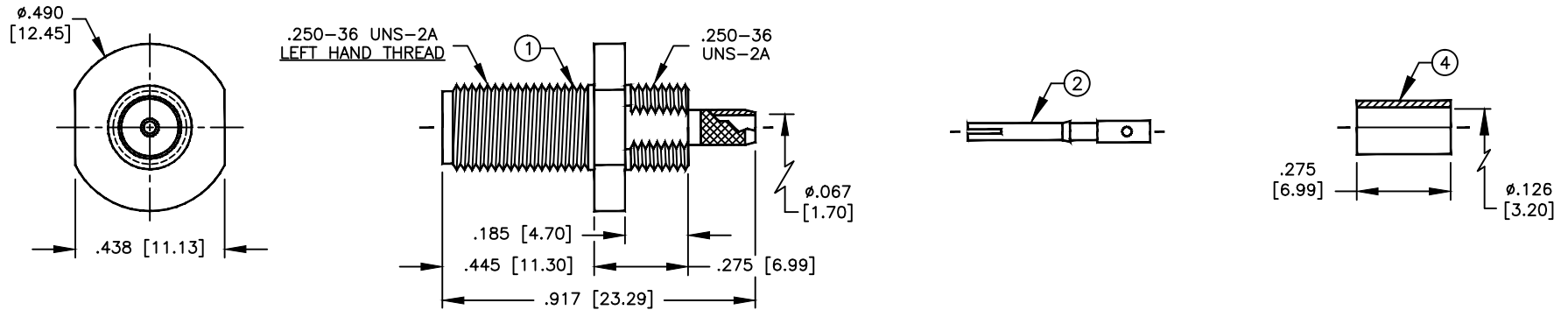


# SPECIFICATION CONTROL DRAWING

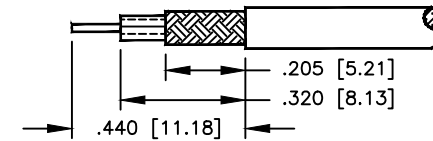
THIS DRAWING CONTAINS INFORMATION PROPRIETARY TO RF INDUSTRIES, LTD. ANY UNAUTHORIZED USE OF THIS DRAWING IS EXPRESSLY PROHIBITED. ANY VIOLATION IS PUNISHABLE UNDER U.S. COPYRIGHT LAWS.

REV	DESCRIPTION	DWN	DATE	APPROVED
A	ENGINEERING RELEASE	KMM	6/1/98	R. RICE
B	CHG P/N / CHG HEX NUT & BODY FLANGE / ADD LOCKWASHER	KMM	8/10/99	R. RICE

ALL DIMENSIONS ARE REFERENCE ONLY



SUGGESTED MOUNTING CONFIGURATION



SUGGESTED STRIPPING INSTRUCTIONS

RECOMMENDED CRIMP DIE: .130 PIN TO BE SOLDERED

## SPECIFICATIONS:

IMPEDANCE: 50 OHMS  
 WORKING VOLTAGE: 375V PEAK @ SEA LEVEL  
 FREQUENCY RANGE: 0-12.4 GHz  
 INSERTION LOSS:  $\leq -.2$  dB @ 6 GHz  
 VSWR MAX: 1.3:1 @ 12 GHz  
 FOR RG-174, 188, 188A, 316/U, ALPHA 9174, 9316,  
 BELDEN 8216, 83269, 83284, 84316 & TIMES LMR-100A CABLE

DIMENSIONS ARE IN INCHES AND [MILLIMETERS]

UNLESS OTHERWISE NOTED TOLERANCES ARE:

DECIMALS DIAMETER

**RFconnectors**  
 DIVISION OF RF INDUSTRIES, LTD.

7610 MIRAMAR RD  
 SAN DIEGO, CA 92126  
 (858) 549-6340  
 (858) 549-6345 FAX

RT-3252-1B-04

SMA FEMALE CRIMP BULKHEAD,  
 FRONT MOUNT, LEFT HAND THREADS

ITEM	DESCRIPTION	QTY	MATERIAL	FINISH
6	HEX NUT	1	BRASS	GOLD
5	LOCKWASHER	1	BRASS	GOLD
4	FERRULE	1	BRASS	GOLD
3	DIELECTRIC	1	PTFE	NONE
2	CONTACT	1	BeCu	GOLD
1	BODY	1	BRASS	GOLD

DRAWN	K. MAXWELL	8/10/99
CHECKED		
ORJ DRAWN	K. MAXWELL	6/1/98
APPROVALS		DATE

SIZE	CABLE GROUP	DWG NO.	REV
A	B	8924	B
SCALE:	2:1	CAD FILE	13ARC B
			SHEET 1 OF 1