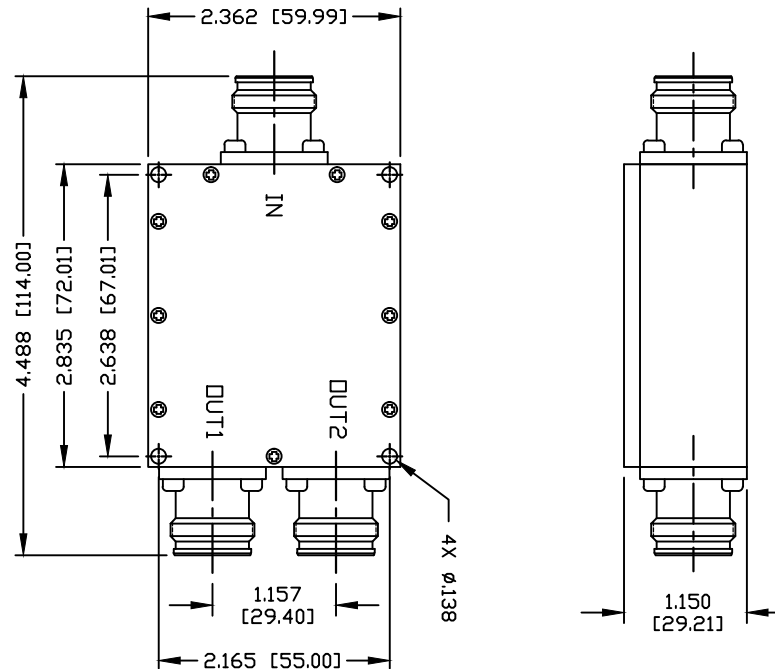


PART NO.

RFPSW-2-43F

REV	DESCRIPTION	DWN	DATE	APPROVED
—	UPDATED ITEM DESCRIPTION IN TB	CZS	04/29/19	JDMc

**SPECIFICATIONS:**

IMPEDANCE: 50 Ohms
 FREQUENCY RANGE: 698–2700 MHz
 INPUT PORT NUMBER: 1
 OUTPUT PORT NUMBER: 2
 SPLIT LOSS: 3dB
 INSERTION LOSS: $\leq 0.5\text{dB}$
 VSWR: ≤ 1.3
 TOTAL INPUT POWER: 50W
 3RD INTERMODULATION: -153 dBc (RELATIVE TO CARRIER)
 3RD INTERMODULATION TEST METHOD: $2 \times 43\text{dBm}$ CARRIERS
 TEMPERATURE RANGE: $-30^\circ\text{C} \sim +70^\circ\text{C}$
 APPLICATION: INDOOR/OUTDOOR
 REGULATORY COMPLIANCE/CERTIFICATIONS: RoHS/IP65

NOTES:

ALL CONNECTORS WILL HAVE PROTECTIVE CAPS ON

CUSTOMER
OUTLINE DRAWINGALL DIMENSIONS
ARE REFERENCE ONLY

UNLESS OTHERWISE SPECIFIED:
DIMENSIONS ARE IN INCHES
AND [MILLIMETERS]

DRAWN C. ZUNIGA	04/29/19
CHECKED	
ORJ DRAWN C. ZUNIGA	10/04/18

RoHS
COMPLIANT

PROPRIETARY AND CONFIDENTIAL
THIS DRAWING CONTAINS
INFORMATION PROPRIETARY TO
RF INDUSTRIES, ANY
UNAUTHORIZED USE OF THIS
DRAWING IS EXPRESSLY
PROHIBITED WITHOUT WRITTEN
PERMISSION FROM RF
INDUSTRIES. ANY VIOLATION IS
PUNISHABLE UNDER U.S.
COPYRIGHT LAWS.

RFconnectors
DIVISION OF RF INDUSTRIES, LTD.

7610 MIRAMAR RD.
SAN DIEGO, CA 92126
(858) 549-6340
(858) 549-6345 FAX

2 WAY POWER SPLITTER 4.3-10 FEMALE - WILKINSON

SIZE	CABLE GROUP	DWG NO.	REVISION
A		RFPSW-2-43F	A
SCALE: NTS	ENGINEERING ID: 000000	SHEET 1 OF 1	